

# Ampliphæe Encryption Intelligence

Ampliphæe Encryption Intelligence provides detailed insights into the use of encryption across your organisation, so that you can fix encryption weaknesses today, and prepare for the coming quantum decryption threat

## Key Use Cases

### Build a comprehensive Encryption Inventory

Uncover the hidden encryption tech in applications, services, and devices that your people use.

### Uncover encryption vulnerabilities

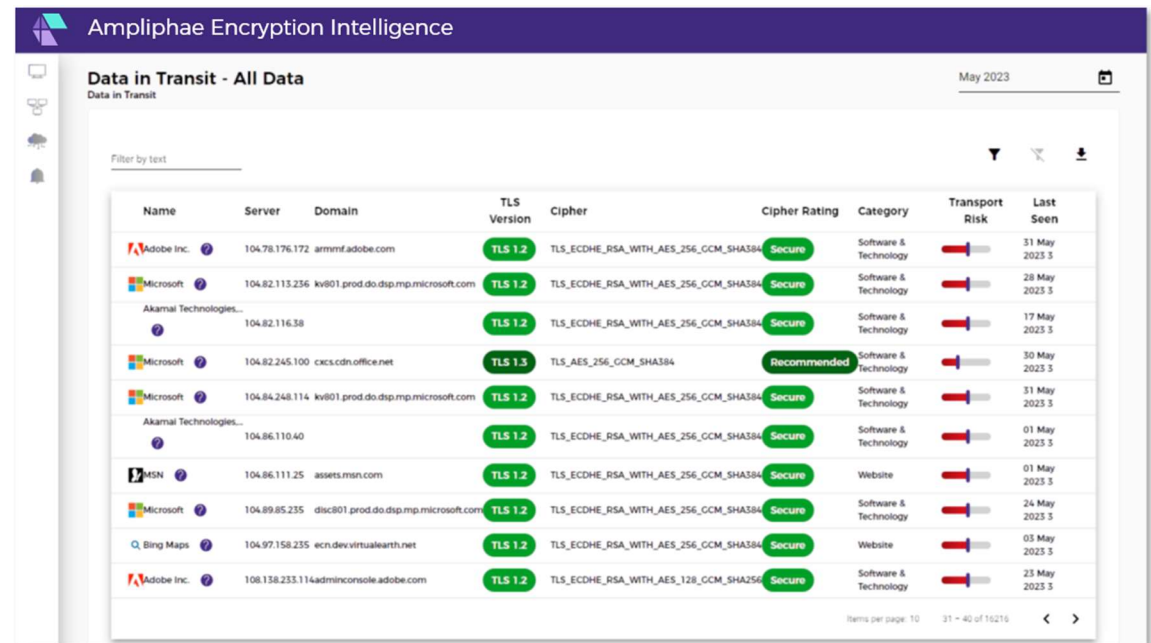
Identify obsolete or weak encryption schemes and highlight exposures to known exploits.

### Prepare for migration to quantum-safe encryption

Prioritise systems, applications and devices so your most critical assets can be protected from quantum attack.

### Continuous encryption monitoring

Monitor your entire encryption landscape continuously, so you can detect and correct threats immediately.



The screenshot shows the 'Data in Transit - All Data' interface. It features a table with columns for Name, Server, Domain, TLS Version, Cipher, Cipher Rating, Category, Transport Risk, and Last Seen. The data is filtered by text. The table lists various domains and their encryption configurations, with ratings ranging from 'Secure' to 'Recommended'.

Name	Server	Domain	TLS Version	Cipher	Cipher Rating	Category	Transport Risk	Last Seen
Adobe Inc.	104.78.176.172	arrrmf.adobe.com	TLS 1.2	TLS_ECDHE_RSA_WITH_AES_256_GCM_SHA384	Secure	Software & Technology	High	31 May 2023
Microsoft	104.82.113.236	kv801.prod.do.dsp.mp.microsoft.com	TLS 1.2	TLS_ECDHE_RSA_WITH_AES_256_GCM_SHA384	Secure	Software & Technology	High	28 May 2023
Akamai Technologies...	104.82.116.38		TLS 1.2	TLS_ECDHE_RSA_WITH_AES_256_GCM_SHA384	Secure	Software & Technology	High	17 May 2023
Microsoft	104.82.245.100	ccs.cdn.office.net	TLS 1.3	TLS_AES_256_GCM_SHA384	Recommended	Software & Technology	High	30 May 2023
Microsoft	104.84.248.114	kv801.prod.do.dsp.mp.microsoft.com	TLS 1.2	TLS_ECDHE_RSA_WITH_AES_256_GCM_SHA384	Secure	Software & Technology	High	31 May 2023
Akamai Technologies...	104.86.110.40		TLS 1.2	TLS_ECDHE_RSA_WITH_AES_256_GCM_SHA384	Secure	Software & Technology	High	01 May 2023
MSN	104.86.111.25	assets.msn.com	TLS 1.2	TLS_ECDHE_RSA_WITH_AES_256_GCM_SHA384	Secure	Website	High	01 May 2023
Microsoft	104.89.85.235	disc801.prod.do.dsp.mp.microsoft.com	TLS 1.2	TLS_ECDHE_RSA_WITH_AES_256_GCM_SHA384	Secure	Software & Technology	High	24 May 2023
Bing Maps	104.97.158.235	ecn.dev.virtualearth.net	TLS 1.2	TLS_ECDHE_RSA_WITH_AES_256_GCM_SHA384	Secure	Website	High	05 May 2023
Adobe Inc.	108.138.233.114	adminconsole.adobe.com	TLS 1.2	TLS_ECDHE_RSA_WITH_AES_128_GCM_SHA256	Secure	Software & Technology	High	23 May 2023

Connect with Ampliphæe



## The Need for Encryption Intelligence

### Encryption is the invisible shield that protects every aspect of modern life, but it carries hidden risks

Every organisation has critical data that must be kept confidential to retain the trust of customers, employees and the public.

Encryption is the bedrock of data protection, but it is being put at risk by outdated technology that is vulnerable to attack. Unless you understand the encryption every device and application uses, you cannot address the risk of data loss.

### Quantum Threat to Encryption

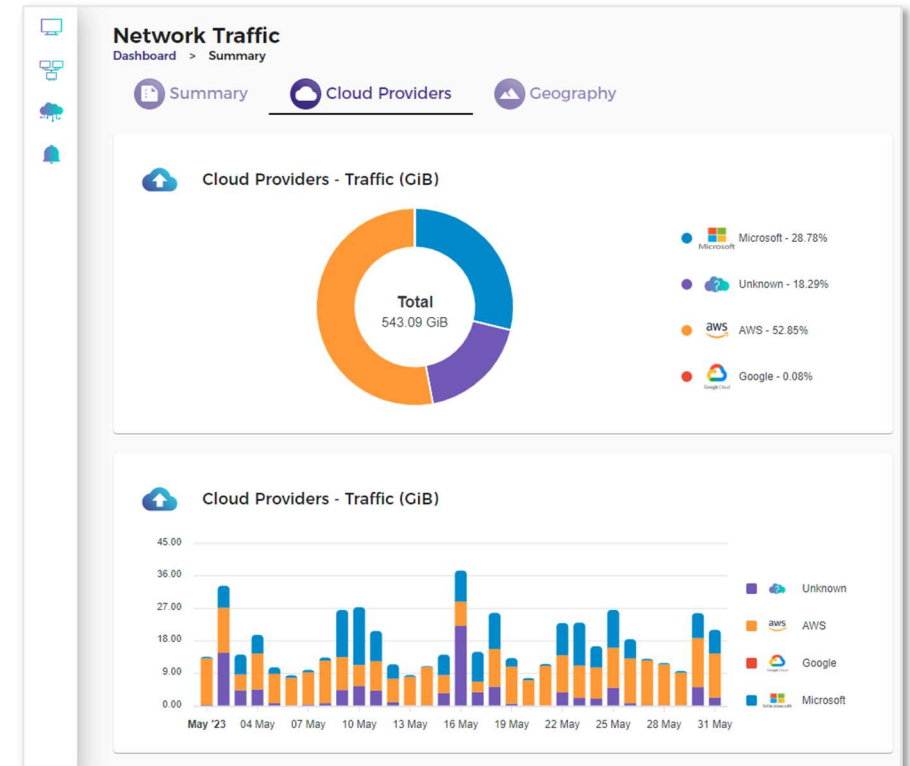
Quantum computers are increasing in capability at an exponential rate, and it is certain that they will soon be capable of decrypting currently 'unbreakable' encryption. We are facing an imminent need to upgrade all encryption, which will be a massive task.

Without good knowledge of where and how encryption is used within the organisation, you cannot build an effective plan.

### Data is at greatest risk when it moves

Encryption protects personal and corporate data in databases and files, but the risk of interception is greatest when your data moves and transits across a network. With increasing use of Cloud and scale-up data centres, more of your critical data is transiting outside your physical control and crossing insecure public networks.

Satellite, radio, fibre optic communications are all open to interception. Only good cryptography keeps your data safe, so you must be able to assess encryption risk.



## Ampliphæ Encryption Intelligence

Every time one of your people uses a Cloud application, or an IoT device reports a data measurement, they depend on encryption. Ampliphæ Encryption Intelligence gives you confidence that weak encryption cannot put your people and data at risk.

### Encryption Discovery

Organisations use encryption millions of times every day, so finding encryption security threats requires efficient discovery at scale.

Ampliphæ Encryption Intelligence processes network communications at gigabit scale to find every use of encryption, classifying and risk assessing in real time.

### Encryption Inventory

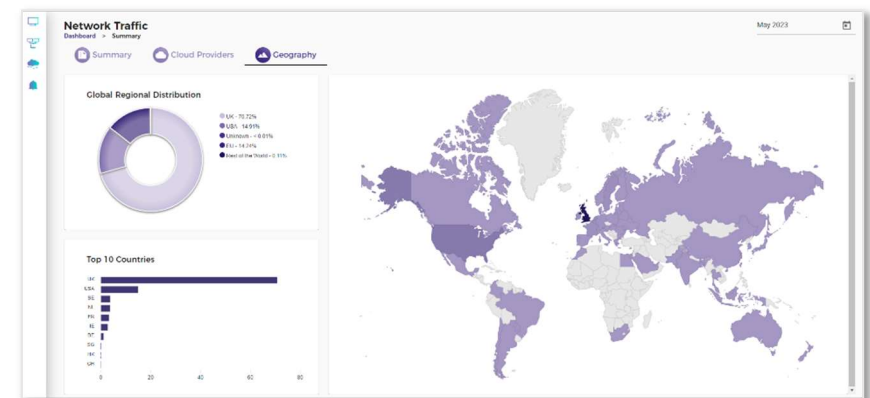
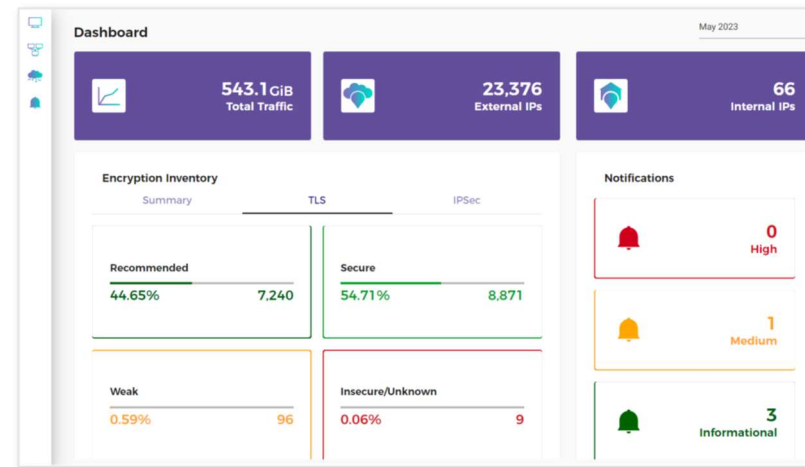
True Encryption Intelligence needs much more than a list of encryption schemes. Ampliphæ's platform uses AI automation to probe and scan every use of encryption to add context, and help you answer key questions such as:

- How effective is the encryption technology?
- What data is being protected?
- Who in your organisation created the data?
- What is the sensitivity lifetime of the data?

### Encryption Monitoring

Your individual encryption landscape changes all the time, so Ampliphæ Encryption Inventory continuously monitors, searching for new ciphers, new protocols and new vulnerabilities.

Send alerts to your existing security monitoring tools, so the cyber defenders in your SoC can get visibility of encryption threats and respond immediately.



Connect with Ampliphæ







## Simple cloud deployment, fast results

**Ampliphæ Encryption Intelligence can be installed and analysing encryption in minutes**

Ampliphæ’s data analytics platform has been proven in multiple customer use cases including Cloud security and risk assessment. Data is collected from across the organisation infrastructure, analysed in-place, and forwarded to the SaaSGuard™ cloud platform for deeper analysis.

### Data collection flexibility

Ampliphæ has a range of data collectors which can be deployed to suit the needs and infrastructure of your organisation

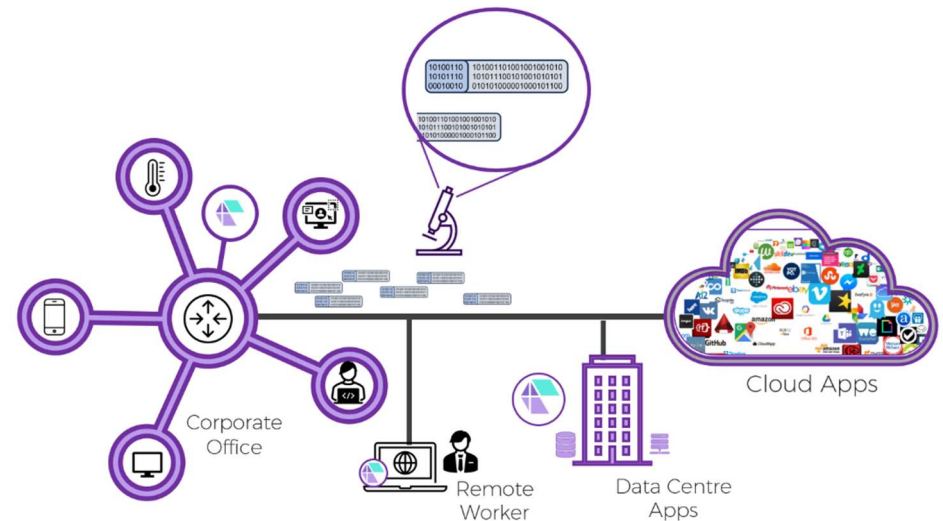
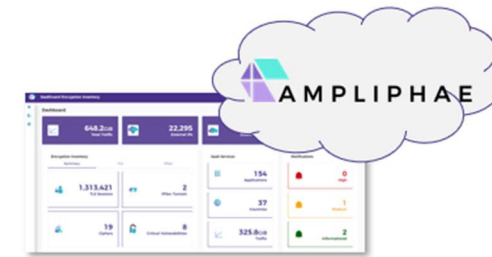
-  Physical network appliance
-  Virtualised appliance (VM or container)
-  Endpoint agent for desktop
-  Web browser plugin

### Reporting and visualisation to aid decision-makers

The Encryption Intelligence application has the dashboards and reports that you need to understand your encryption landscape in detail, build a business case to mitigate issues, and manage progress towards full encryption security.

### Integration to support security infrastructure

Ampliphæ Encryption Intelligence has the APIs and flexible integration points to integrate it with your existing security monitoring infrastructure via your SIEM and SoC.



Connect with Ampliphæ





<https://ampliphae.com>



[info@ampliphae.com](mailto:info@ampliphae.com)



[Ampliphae Ltd.](#)



[@Ampliphae](#)

